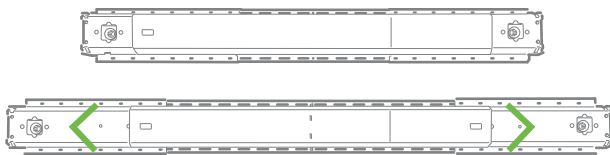


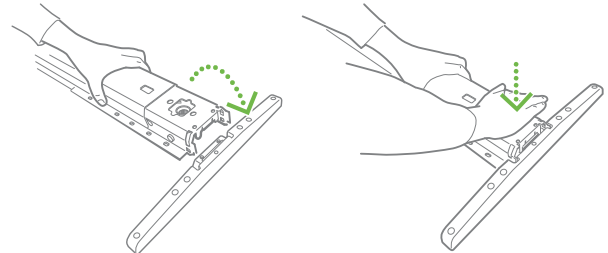
FUMAC UPGRADE – SHAPE – BLOCK – SWITCH

Quick guide til montering af hæve-/sænkebord med LINAK® stel

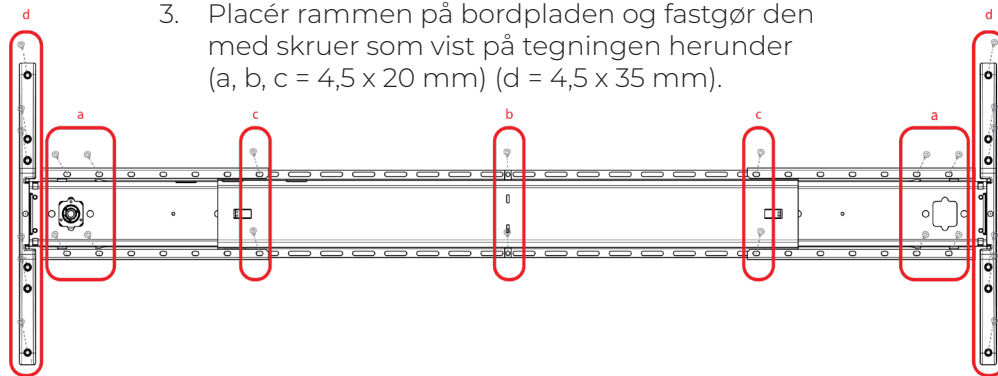
1. Juster længden af sargen til bordstørrelsen. Pas på ikke at trække den helt fra hinanden.



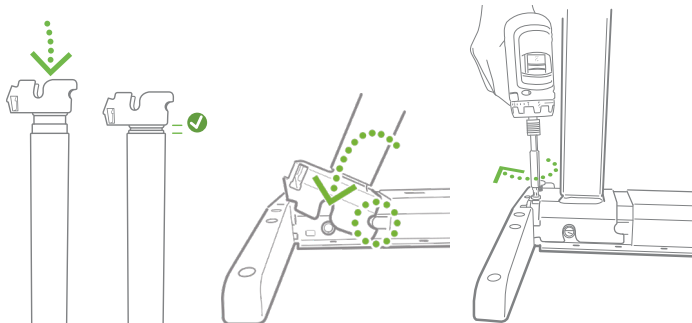
2. Monter sidestykkerne ved at løfte sargen og klikke den på i begge ender.



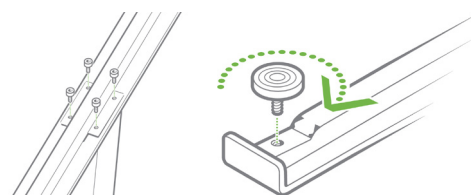
3. Placér rammen på bordpladen og fastgør den med skruer som vist på tegningen herunder (a, b, c = 4,5 x 20 mm) (d = 4,5 x 35 mm).



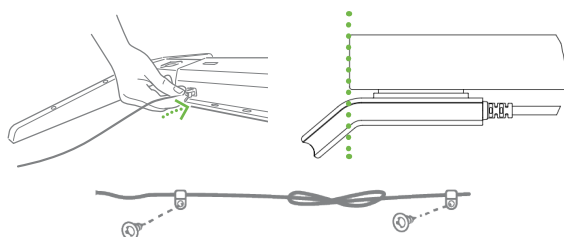
4. Monter søjlerne – sørg for, at søjlerne er kørt helt i bund. Klik dem på rammen og skru hver fast med to skruer (M6 x 20 mm).



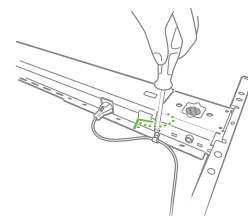
5. Monter hver fod med enten 2 x M8 eller 4 x M6 skruer. Sæt justeringsskrue under fødderne.



6. Klik kablet til betjeningen i rammen og skru betjeningen fast med to skruer (4,0 x 35 mm). Sæt ledningen fast med to skruer (4,5 x 20 mm) og to kabelklemmer.



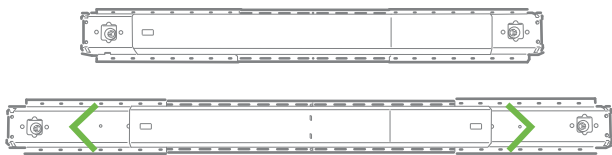
7. Sæt strømkablet i rammen og brug en kabelklemme til at sætte det fast til bordpladen.



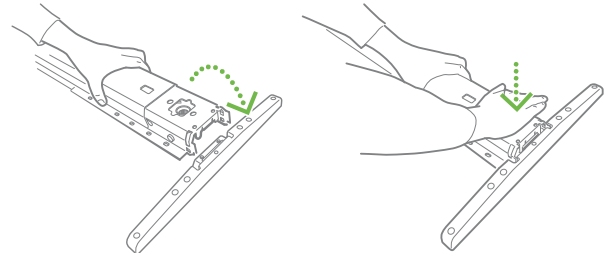
FUMAC UPGRADE – SHAPE – BLOCK – SWITCH

Quick guide for mounting a sit/stand desk with LINAK® frame

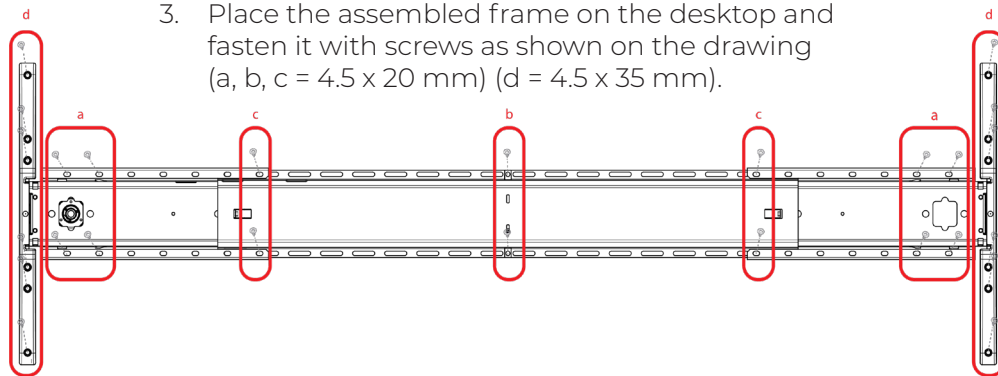
1. Adjust the beam length to fit the desktop.
Be careful not to pull it completely apart.



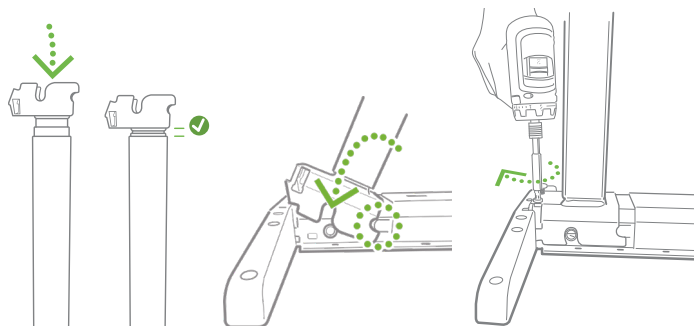
2. Mount the cantilevers by lifting the beam and clicking it down in both ends.



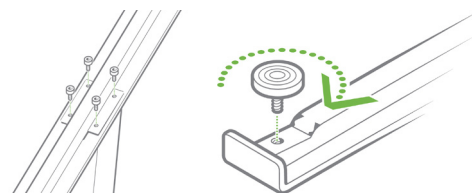
3. Place the assembled frame on the desktop and fasten it with screws as shown on the drawing (a, b, c = 4.5 x 20 mm) (d = 4.5 x 35 mm).



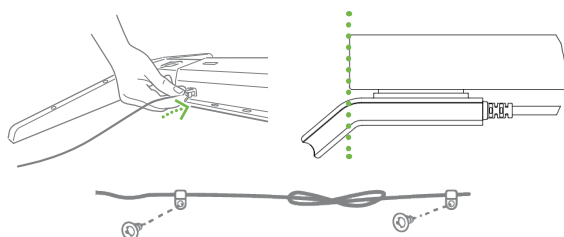
4. Mount the columns – make sure they are completely retracted. Click them on the frame and fasten each with two screws (M6 x 20 mm).



5. Mount each foot with either 2 x M8 or 4 x M6 screws. Mount the adjustment screws under the feet.



6. Click the cable for the desk panel in the frame and fasten the desk panel with two screws (4.0 x 35 mm). Fasten the cable with two screws (4.5 x 20 mm) and two cable clamps.



7. Plug the mains cable into the beam and use a cable clamp to fasten it to the desktop.

